

# User Manual

## HC-350G



# Contents

1. Introduction.....	3
1.1 Application.....	3
1.2 Power Supply.....	3
1.3 Caution.....	3
1.4 Key Features.....	4
2. Whole View and Details of Camera.....	5
2.1 Front View of Camera.....	5
2.2 Back View of Camera.....	5
2.3 Bottom View of Camera.....	6
2.4 Remoter.....	6
2.5 Screen Information Display.....	8
2.6 Setting menu.....	8
3. Quick Operation.....	9
3.1 Load Battery.....	9
3.2 Insert SD card and SIM card.....	9
3.3 Power On.....	10
3.3.1 Config.....	10
3.3.2 ON.....	10
3.4 Menu setting Operation.....	10
3.4.1 Photo menu .....	10
3.4.2 Video Menu .....	12
3.4.3 System Menu .....	13
3.4.4 SMTP Menu .....	15
4. MMSCONFIG Setting.....	16
5. SMS Control.....	20
6. Firmware Upgrade.....	20
7. Specifications.....	21
8. Packing List.....	22

# 1. Introduction

Thank you for choosing one of our highly qualified 3G Scouting Trail Camera. This 16MP HD digital camera was totally R&D by our diligent and smart engineers based on feedbacks and requirements from customers globally.

## 1.1 Application

- a. Instant surveillance camera for home, office, construction site, and warehouse, etc
- b. Motion-triggered infra-red night vision surveillance;
- c. Animal observation and hunting;

## 1.2 Power Supply

### a. AA alkaline batteries

This camera can either work with 8x AA Alkaline batteries.

Please note that the voltage of rechargeable AA batteries (1.2V) is insufficient to power this device.

### b. Solar Panel

To bring users better using experience, our engineers designed this camera to be able to work with most standard 9V lithium battery build-in solar panels.

### c. Power Adapter

This camera can also be powered by an external 9V DC adapter. Recommend to remove the alkaline batteries when power adapter is used, to avoid surcharging.

## 1.3 Caution

- a. Please insert the SD card when the power switch is at OFF position before Configing the camera.
- b. Please do not insert or take out the SD card when the power switch is at ON position.
- c. It is recommended to format the SD card by the camera when used at the first time.
- d. The camera will be in USB mode when connected to a USB port of a computer. In this case, the SD card functions as a removable disk.
- e. Please ensure sufficient power when having firmware upgrade, otherwise the upgrade process could be interrupted incorrectly. If any fault occurs after improper upgrading process, the camera may stop function properly.

## 1.4 Key Features

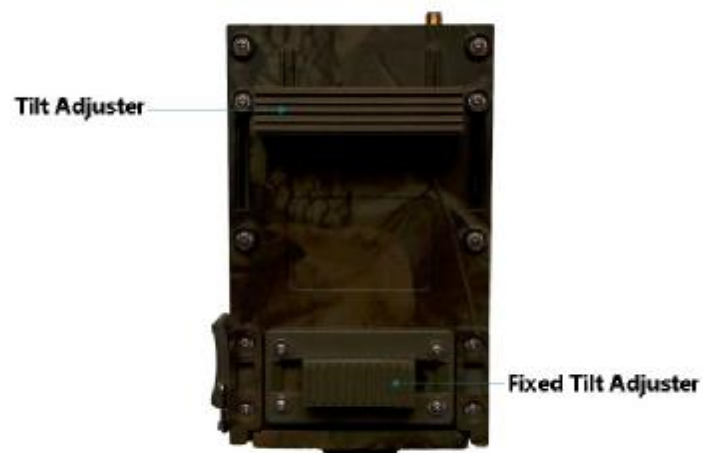
1	Built-in 2.0" TFT color screen to review photos and videos on camera
2	40pcs IR LEDs for night vision distance up to 20 meters
3	Programmable 16/12/8 Megapixel high-quality resolution
4	Color pictures during day; black and white at night
5	Adjustable PIR sensitivity; HIGH, MID, LOW
6	Impressive quick trigger time: 0.5s
7	Multi-shot pictures; 1,3,6,9
8	Adjustable delay between motions; 1/5/10/30 seconds/minutes
9	Adjustable video length: 10/30/60/90 seconds
10	With 8x AA alkaline batteries, the longest standby time is up to 6 months
11	Available operation temperature: -20°C to 60°C
12	With specified Timer, camera can be programmed to work only during preset time period every day
13	Stamp of date, time, temperature and moon phase on every picture
14	Audio Recording
15	Support 3G SIM card to get real-time photos;
16	With MMS/SMTP function, camera can transmit photos to 1-4 preset mobile phones or 1-3 email per trigger
17	SMS to enable camera to shoot a photo and send back instantly, let camera work or not work, get number of taken picture and battery status

## 2. Whole View and Details of Camera

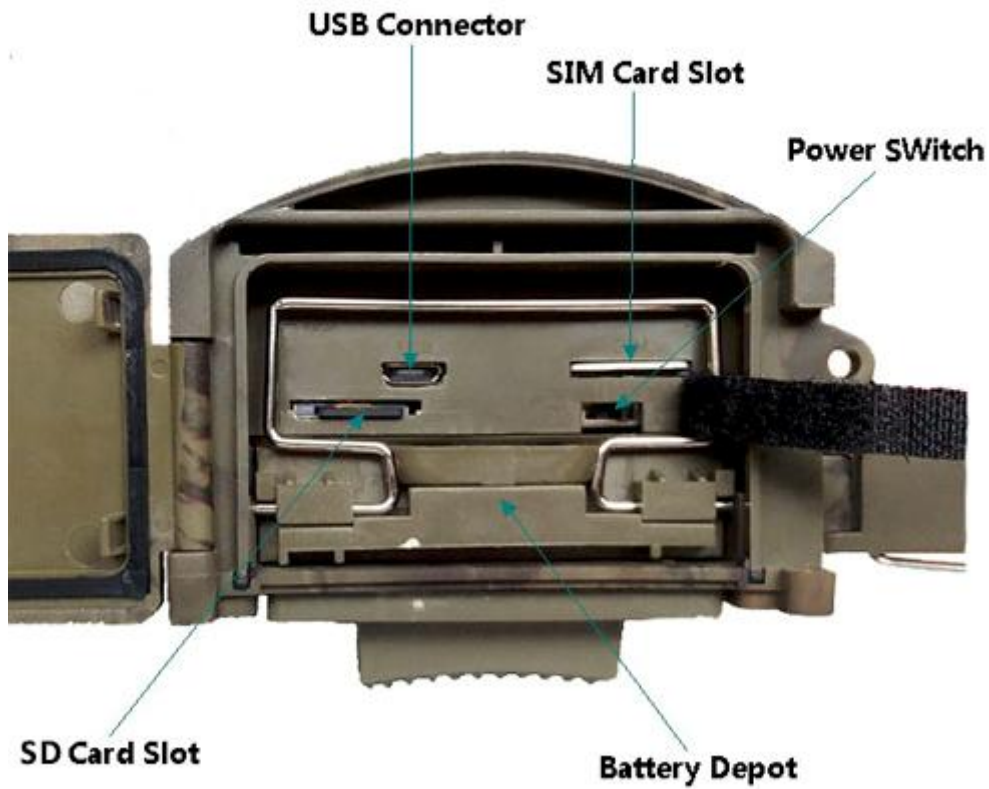
### 2.1 Front View of Camera



### 2.2 Back View of Camera



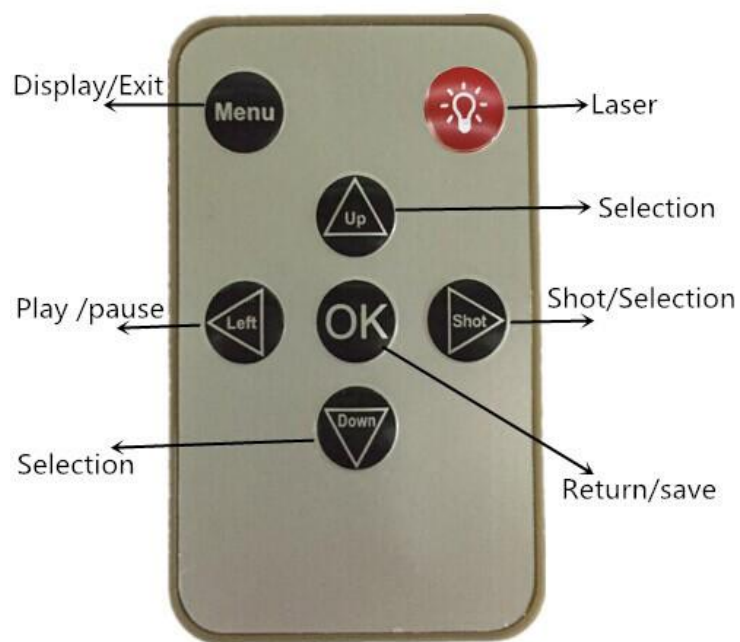
## 2.3 Bottom View of Camera










## 2.4 Remoter

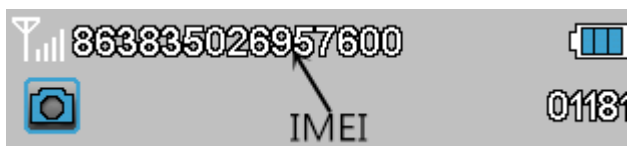


Note: Press the punctuation “” for laser light.

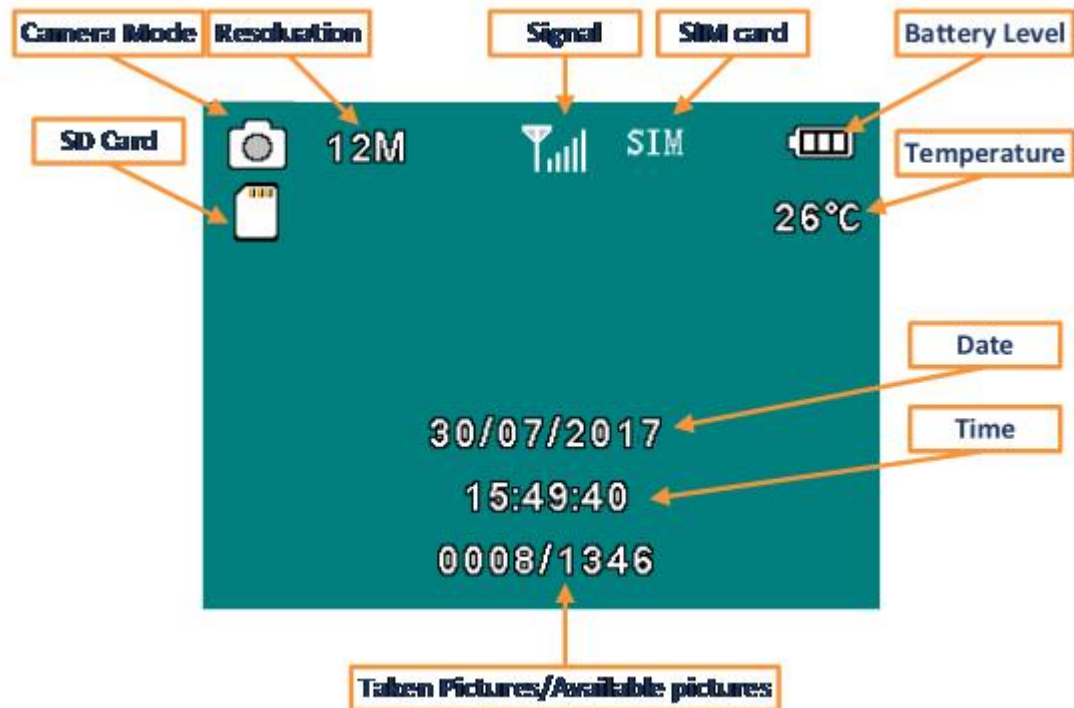


Note (Under CONFIG mode):

1. Press  directly; the camera will take picture or video directly.
2. Press  directly; the picture or video recorded can be viewed.
3. Viewing picture, press  or .
4. Viewing video, press  to play, press  again to stop, press  to return.
5. Press "Left" directly to get the IMEI (in the CONFIG interface).



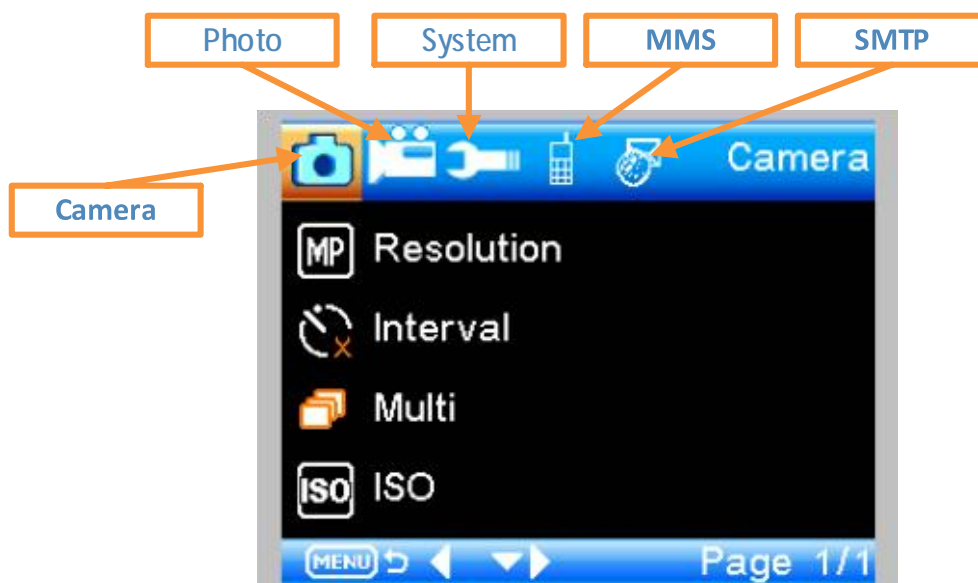
## 2.5 Screen Information Display



Note: To active its MMS or SMTP functions, the camera should find signal and SIM card.

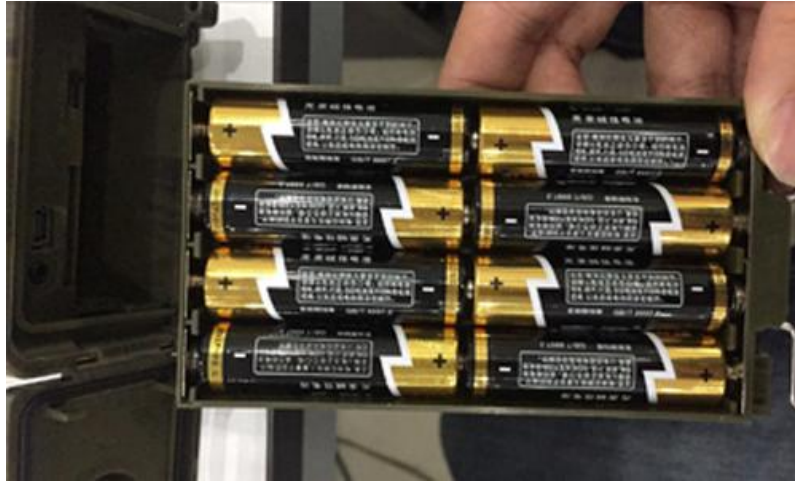
## 2.6 Settings Menu

There are five parts setting of the camera

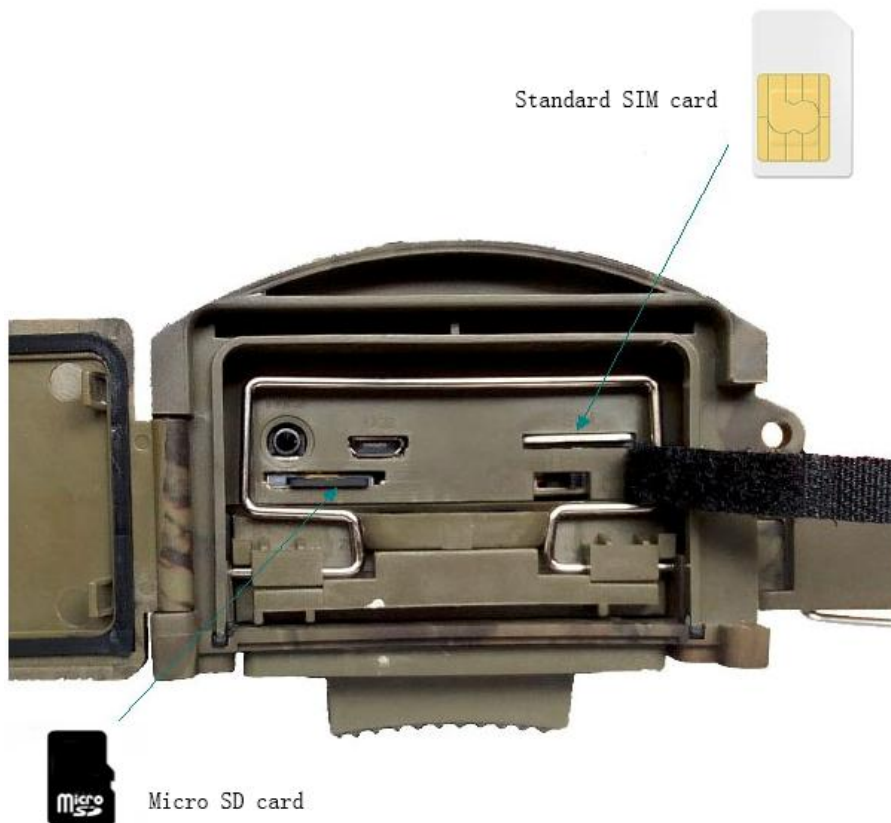


## 3. Quick Operation

### 3.1 Load Batteries



### 3.2 Insert Micro SD card and SIM card



Note: To active its MMS or SMTP function, please save setting file Parameter.dat by MMSCONFIG to SD card.

### 3.3 Power on



Switch from OFF to Config

#### 3.3.1 CONFIG

In this mode, the screen lights up. User can do the operations by remoter:

- Setting Camera Menu, including photo, video and system
- Take picture or video
- View picture or video

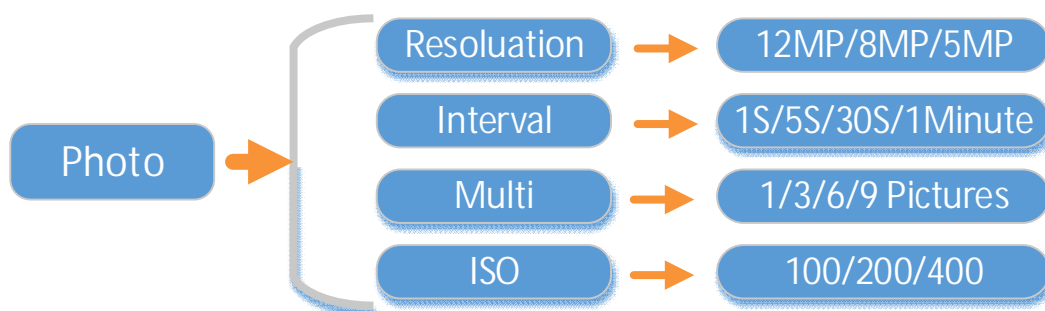
#### 3.3.2 ON

In this mode, the screen is closed. The camera works automatically.

### 3.4 Menu Setting Operation

User can take photo, video and system menu setting by remoter; MMS menu and SMTP menu setting by software MMSCONFIG from CD.

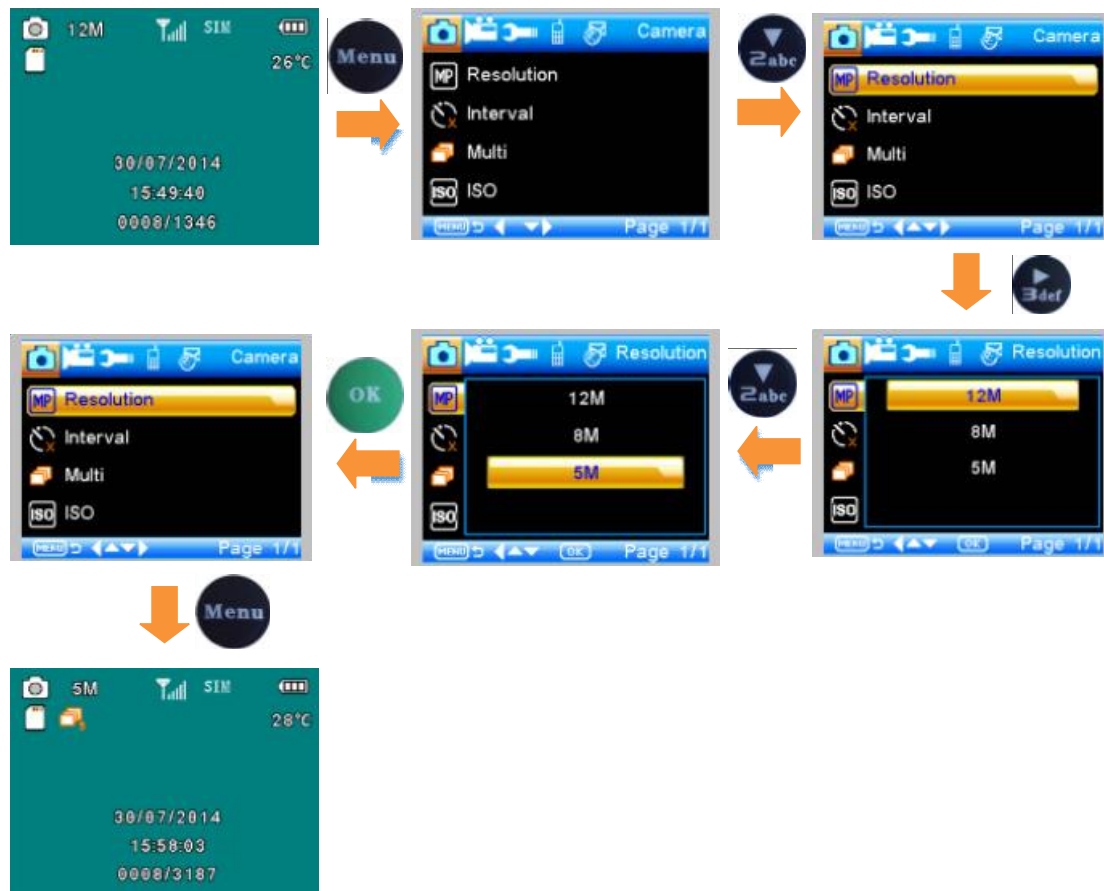
#### 3.4.1 Photo Menu



## Description:

Menu	Content	Description
Resolution	16MP, 12MP, 8MP	Photo size
Interval	1/5/10/30 sec/min	Waiting time from the last taking
Multi	1/3/6/9	Number of photos taken every time
ISO	100,200,400	The camera exposure level

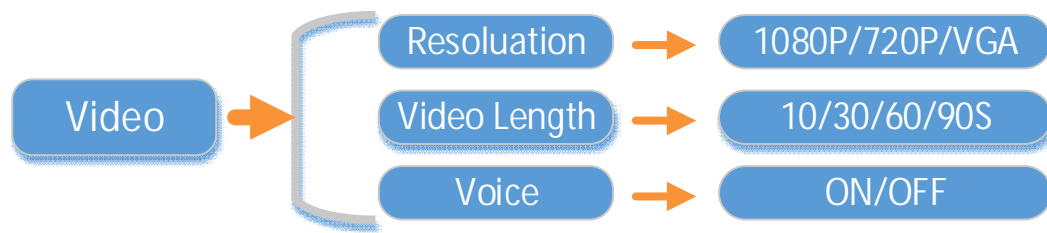
To change 12MP to 5MP Resolution, the remoter operations are:



## Note:

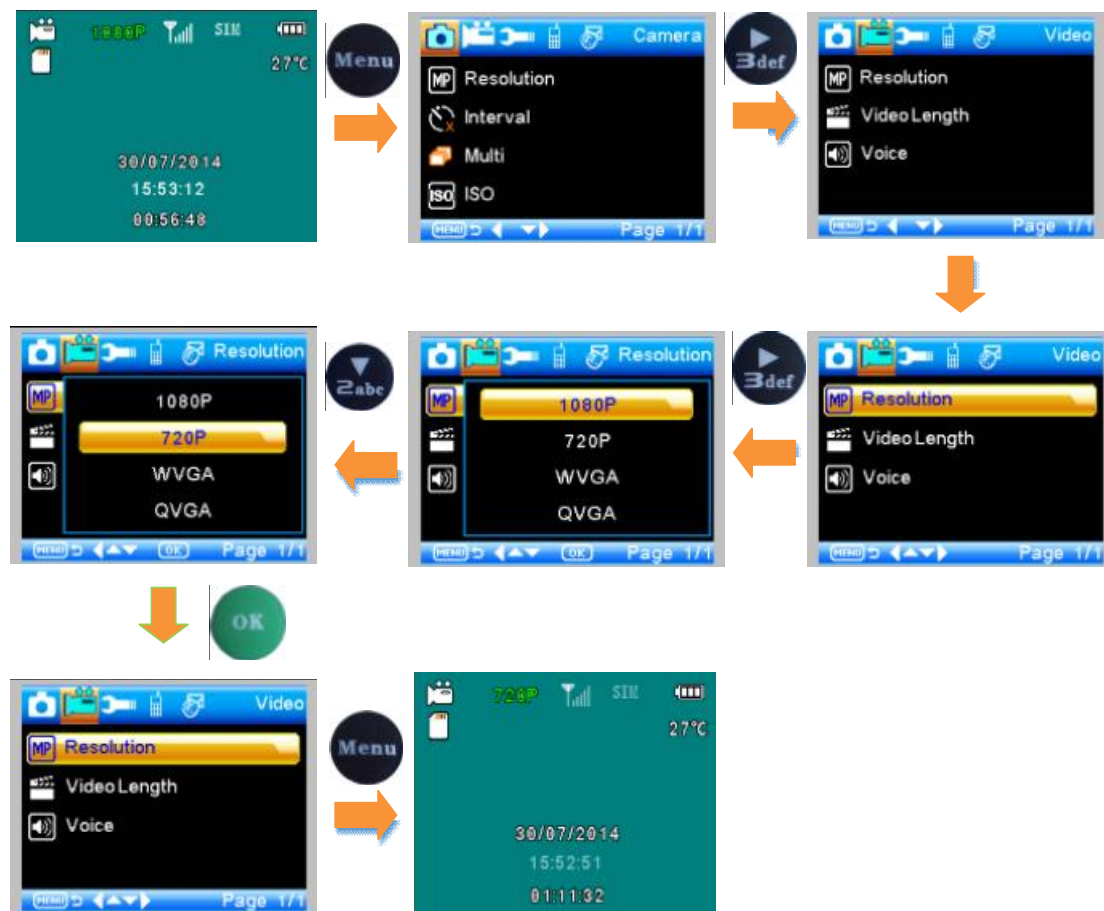
1. The mode is Camera or camera & Video
2. Interval, Multi and ISO setting operations are same.

### 3.4.2 Video Menu



Menu	Content	Description
Resolution	1080P, 720P, WVGA, QVGA	Video size
Video Length	10S, 30S, 60S, 90S	The time length of video
Voice	On, Off	If On, Video sound is recorded

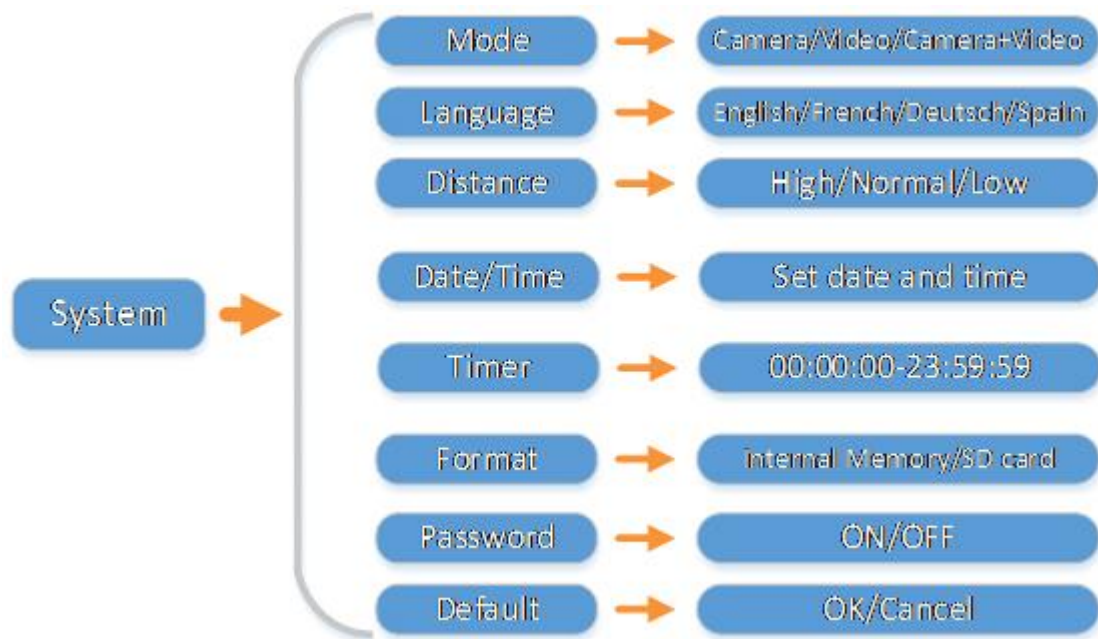
To change 1080P to 720P Resolution, the remoter operations are:



Note:

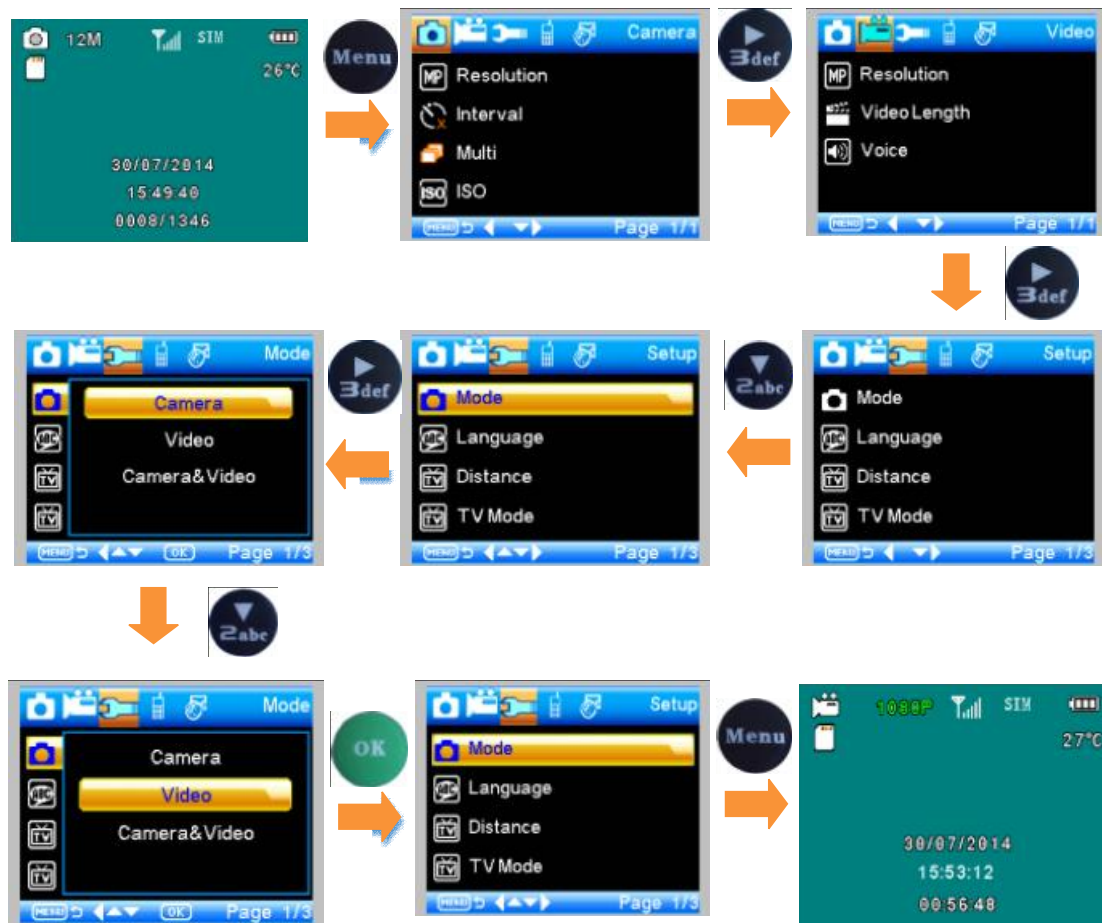
1. The mode is 1080P video mode
2. Video length and voice setting operations are same.

### 3.4.3 System Menu



Menu	Content	Description
Mode	Camera, Video, Camera & video	Taking picture, video, picture and video
Language	English, François, Deutsch and so on	Camera Menu language
Date/Time	31-07-2014 15:49:40	Date-Month- Year Hour: Minute: Second
Password ON/OFF	ON, OFF	Password of entering camera
Password	****	4 digital number
Timer	On, Off	If On, the camera only works in the period

To change Camera to Video mode, the remoter operations are:




Note:

1. Language, Distance, TV Mode, Format and Default setting operations are same.

2. In Date/Time, Timer and Password setting:

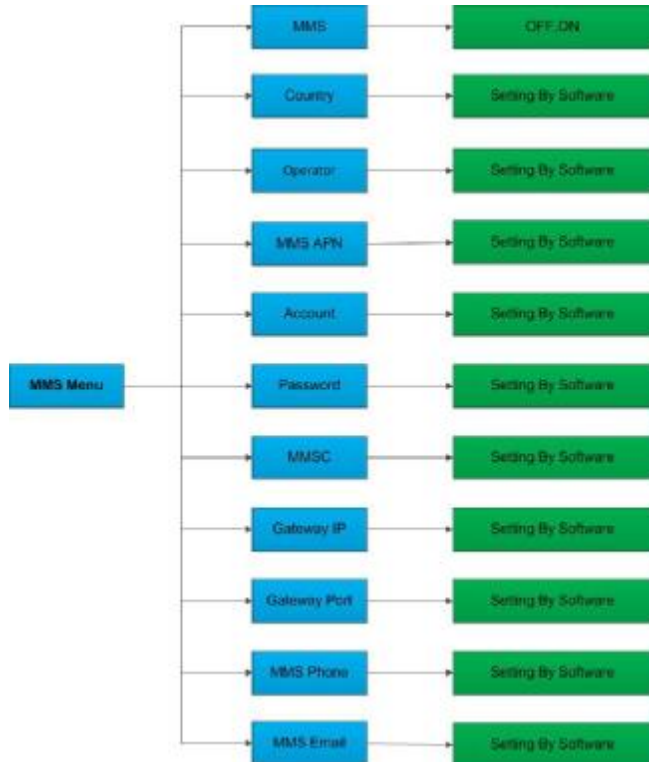
a. Press  or  to select number

b. Press  to enter into next menu

3. After select Default, the setting is:

Setting	Default	Items
Mode	Camera	Camera, Video, Camera & Video, Time lapse
Resolution (Camera)	12M	16M, 12M, 8M
Delay	1 Seconds	1-30 Seconds, 1-30 Minute
Multi	Single	Single, 3, 6, 9 Pictures
ISO	400	Auto 100, 200, 400
Resolution (Video)	1080P	1080P, 720P, WVGA, QVGA
Video Length	10s	10s, 30s, 60s, 90s
Date/Time	Same as last time	YY/MM/DD, MM/DD/YY, DD/MM/YY Adjust
PIR Distance	High	High, Normal, Low
Language	English	12 Languages selectable
Timer	0 0 0 to 23 59 59	Adjustable
Format	Internal Memory	Internal Memory, TF Card
Password	Off	Off, On

### 3.4.4 MMS Menu



## 4. MMSCONFIG Setting

1. Load CD into the computer

2. Run MMSCONFIG.exe file from MMSCONFIG folder



3. Photo, Video and System Menu Setting



Note: After setting menu by remoter, user can skip it.

### 4. MMS Setting

A. Auto MMS Mode:

In Auto MMS Mode, there is configured information for selection

- a. Choose Country
- b. Choose Operator
- c. Add phone number for receiving photos
- d. Add email address for receiving photos



## B. Manual MMS Mode:

If there is no configured information for selection, please choose Manual MMS Mode.

Firstly, User need to contact SIM card operator to get APN, Account, Password, MMSC, IP and Port information. Then

- a. Add phone number for receiving photos
- b. Add email address for receiving photos

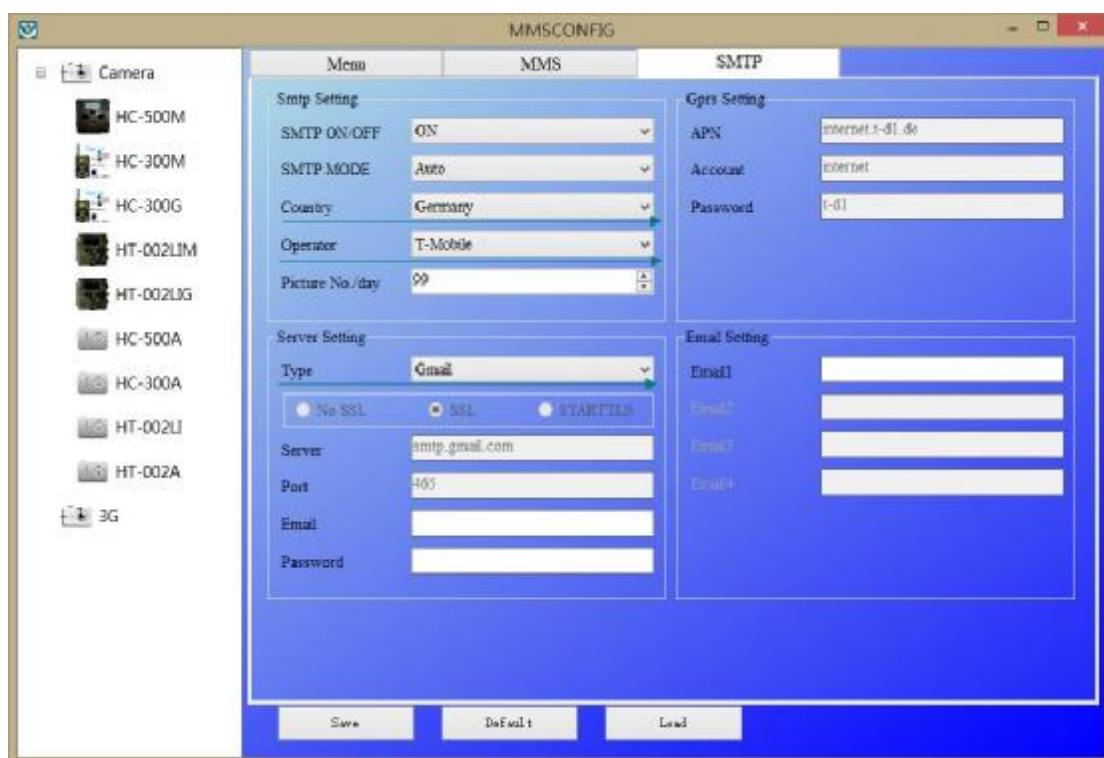
## 5. SMTP Setting

This way of sending pictures is also called GPRS transmission by users. It's highly welcome now, because the picture is sent from email to email, only charge the flow cost.

### A. Auto SMTP Mode:

In Auto SMTP Mode, there is configured information for selection

- a. Choose Country
- b. Choose Operator
- c. Choose Type of email
- d. Add sending email address on the left
- e. Add sending email address password on the left
- f. Add receiving email address on the right



## B. Manual SMTP Mode:

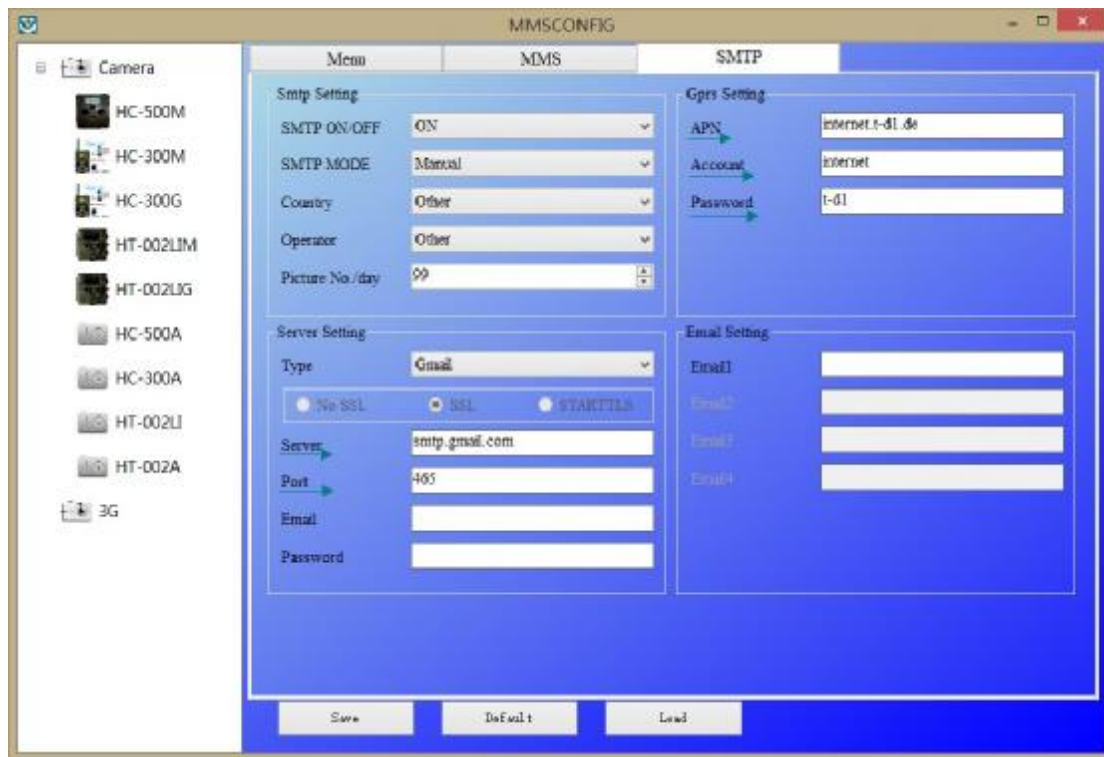
If there is no configured information for selection, please choose Manual SMTP Mode.

Firstly, User need to contact SIM card operator to get APN, Account, Password information; contact sending email provider to get server, port information.

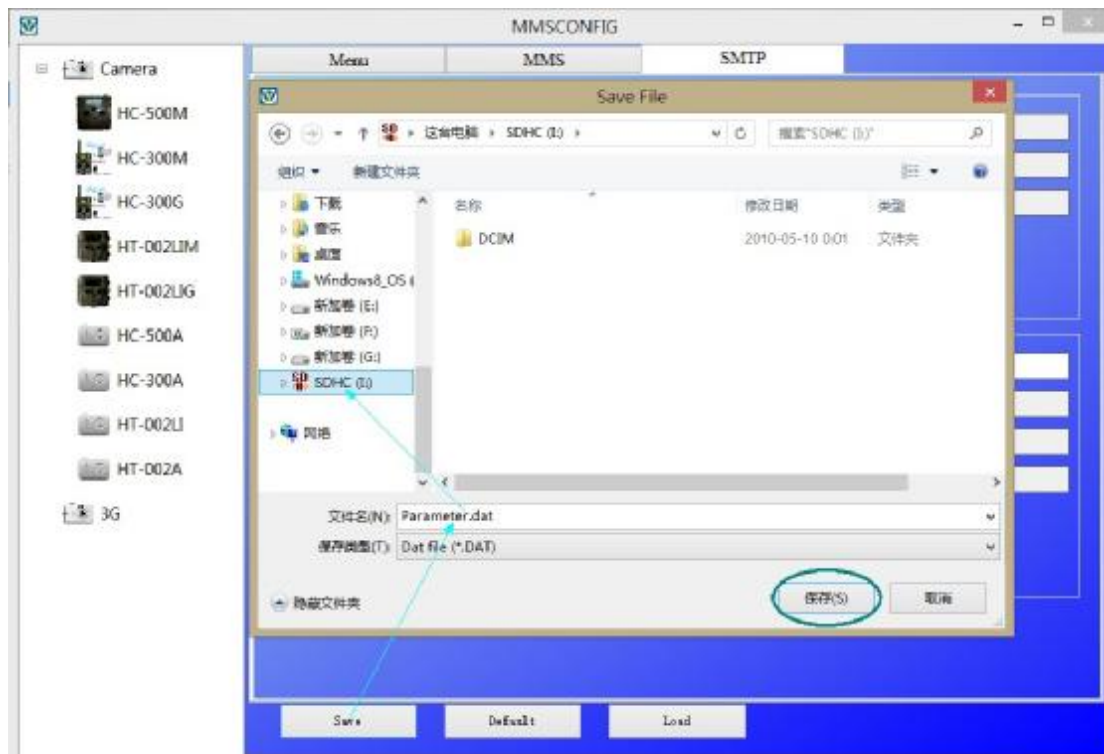
- a. Add sending email address on the left

b. Add sending email address password on the left

c. Add receiving email address on the right



## 6. Save Parameter.dat to SD card



## 5. SMS Control

There are 2 ways for using:

1. Send SMS codes to camera directly
2. Install phone application, select function command

The SMS codes are:

Code	Function	Meaning
*530*	Camera Start	Start Working
*531*	Camera Sleep	Stop Working
*500*	Capture	Camera takes a picture, then sends it to configured phone or email
*505*	Capture and get pic(MMS mode)	Camera take a picture, then sends it to current phone
*520*	Get Pic information	Camera will send a text with picture number, SD card capacity, battery lever.

## 6. Firmware Upgrade

This camera equipped with an automatic upgrade function, Upgrading is needed only when an improved firmware is available. The operations are as following:

1. Unzip the update file
2. Copy the .bin file to TF card.
3. Insert the TF card into the camera.
4. Power on the camera (Config Mode) .
5. The camera will read it and update itself automatically. When updating the camera, its screen is black.

6. The screen will light on after being finished
7. Plug out the TF card, then insert it into pc, delete the FWR801.bin in the TF card.(If you don't do this, the camera will enter update mode when power on again).
8. Insert the TF card into the camera for its working.

## 7. Specification

Image Sensor	5 Mega Pixels Color CMOS
Memory	TF Card up to 32GB
Lens	F=3.1; FOV=90 °
Size	145mm * 80mm * 55 mm
TFT Display Screen	2.0 inch
LED	Black IR
PIR Distance	High/Normal/Low
PIR Sensor Sight Angle	90 Degrees
Number of IR LED	40 LEDs
Max Night Vision Lighting Distance	65ft/20 meters
Trigger Speed	0.5second
Triggering Interval :	1/5/10/30sec/min (default 1 sec)
Selectable Image Resolution:	16MP/12MP/8MP
Multiple Photo on one detection	1/3/6/9
Video Resolution	1080P/720P/VGA
File Format	JPEG/AVI
Date Time Imprint	Yes
Moon Phase Imprint	Yes
Password Security	4 digital PIN code
Frequency Bands	GSM 850/900/1800/1900 MHz UMTS/HSPA 850/900/1900/2100
Remote Control	SMS
GPRS transmission	Data transfer by email
MMS to phone	1-3 phone number
MMS to e-mail	1-3 email address
Stand-by current	0.2mA
Stand-by time	6Months
Power Supply	8×AA battery
Water proof	IP56

## 8. Packing List



Camera



Remote Control



3G Antenna



USB Cable



Tilt Adjust



Strap



CD